

20' HC LIQUID COOLED DC CONTAINER ENERGY STORAGE SOLUTION 5.0 MWh



Product Features

- High Safety

Compliant with UL9540A
- High Energy Efficiency

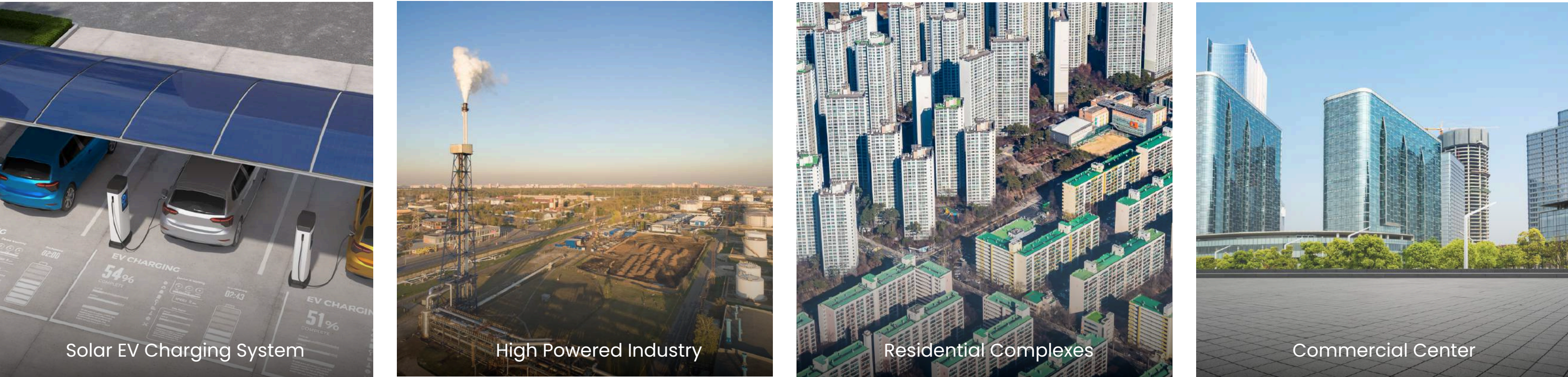
>95% energy efficiency for DC charge and discharge
- Long Lifespan

Designed for a 15 year service life with a 30% increase in battery lifespan
- High Returns

Offers high energy density and integration for increased life cycle returns
- Easy to be Installed

Highly integrated design for simple scalability and installation; supports third-party SCADA and cloud-based EMS integration

Application Scenarios



Max-20HC-3440

**Electric Power Scenarios:**  
Wind or photovoltaic power generation, suitable for regions with significant peak-valley price differences and areas with large fluctuations in daily load.



Max-20HC-5000

**Electric Power Scenarios:**  
Wind or photovoltaic power generation and regions with significant peak-valley price differences or large load fluctuations



Specification

Product Type	Max-20HC-3440	Max-20HC-5000
Product Category	20HC DC liquid-cooling container energy storage solution	
Rated Energy	3.44 MWh@0.5C	5.0 MWh0.5C
Rated Power	180kW*10/1.7 MW	≤417kW*6/1.25MW*2
Rated Output Voltage	900-1500 Vd.c.	1040 - 1500 Vd.c.
Cell Capacity	280 Ah	314 Ah
Cell Type	LFP	LFP
Configuration	IP384S* (10 or 9 or 8)	IP416S*12
Maximum Discharge Current	173A*(10 or 9 or 8)	157 A*12
Maximum Charging Current	173A*(10 or 9 or 8)	193 A*12@5min
Charging Temperature	0~45°C	-30~+50°C
Discharging Temperature	-20~50°C	-35~+60°C
Communication Port	CAN, 485, TCP/IP	CAN, 485, RJ45/Optical Fiber
Cooling Method	Liquid Cooling	Liquid Cooling
Protection Level	IP54	IP 55
Functional Safety	class B	Class B
Product Weight	<36T	<42T
Dimensions (WxDxH)	6058x2438x2896 mm (20 HC)	6058x2438x2896 mm (20 HC)
Application	Utility-scale, C&I	Utility-scale, C&I
Testing & Certification	<div><div></div><div></div><div></div><div></div><div></div><div></div></div>	

0815-8801-398

cs@gtpower.co.id

www.gtpower.co.id

JI Raya H. Tabri No.228, Blok B Blesindo Industrial Area Legok  
Tangerang Regency, Banten Province 15820 - Indonesia